

Human CCR8 Protein-Nanodisc

Cat. No. CR8-HM1N29

Description

| | |
|-------------------------|--|
| Source | Recombinant Human CCR8 Protein-Nanodisc is expressed from HEK293 with His tag at the C-terminus. It contains Met1-Leu355. |
| Accession | P51685-1 |
| Molecular Weight | The protein has a predicted MW of 42.60 kDa. |
| Endotoxin | Less than 1EU per μg by the LAL method. |

Formulation and Storage

| | |
|--------------------|---|
| Formulation | Supplied as 0.22 μm filtered solution in PBS (pH 7.4). Notice: Not recommended for immunization and flow cytometry in mammalian cells. |
| Storage | Valid for 12 months from date of receipt when stored at -80°C . Recommend to aliquot the protein into smaller quantities for optimal storage. Please minimize freeze-thaw cycles. |

Background

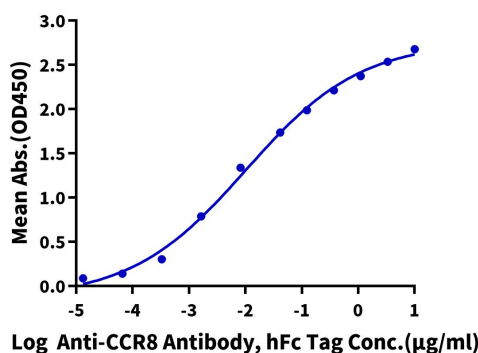
CC chemokine receptor (CCR) 8 (previously called CKR-L1 or TER1 and designated CD198), which is expressed on Th2 cells and eosinophils, has been implicated in allergic diseases. CCR8 may regulate monocyte chemotaxis and thymic cell line apoptosis and is alternative coreceptor with CD4 for HIV-1 infection.

Assay Data

ELISA Data

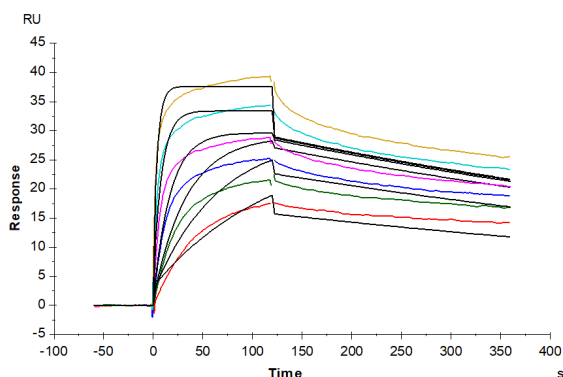
Human CCR8 Nanodisc, His Tag ELISA

0.5 μg Human CCR8 Nanodisc, His Tag Per Well



Immobilized Human CCR8 Nanodisc, His Tag at 5 $\mu\text{g}/\text{ml}$ (100 $\mu\text{l}/\text{well}$) on the plate. Dose response curve for Anti-CCR8 Antibody, hFc Tag with the EC₅₀ of 10.2ng/ml determined by ELISA (QC Test).

SPR Data



Human CCR8 nanodisc, His Tag captured on CM5 Chip via Anti-His Antibody can bind Anti-CCR8 Antibody, hFc Tag with an affinity constant of 53.40 pM as determined in SPR assay (Biacore T200).